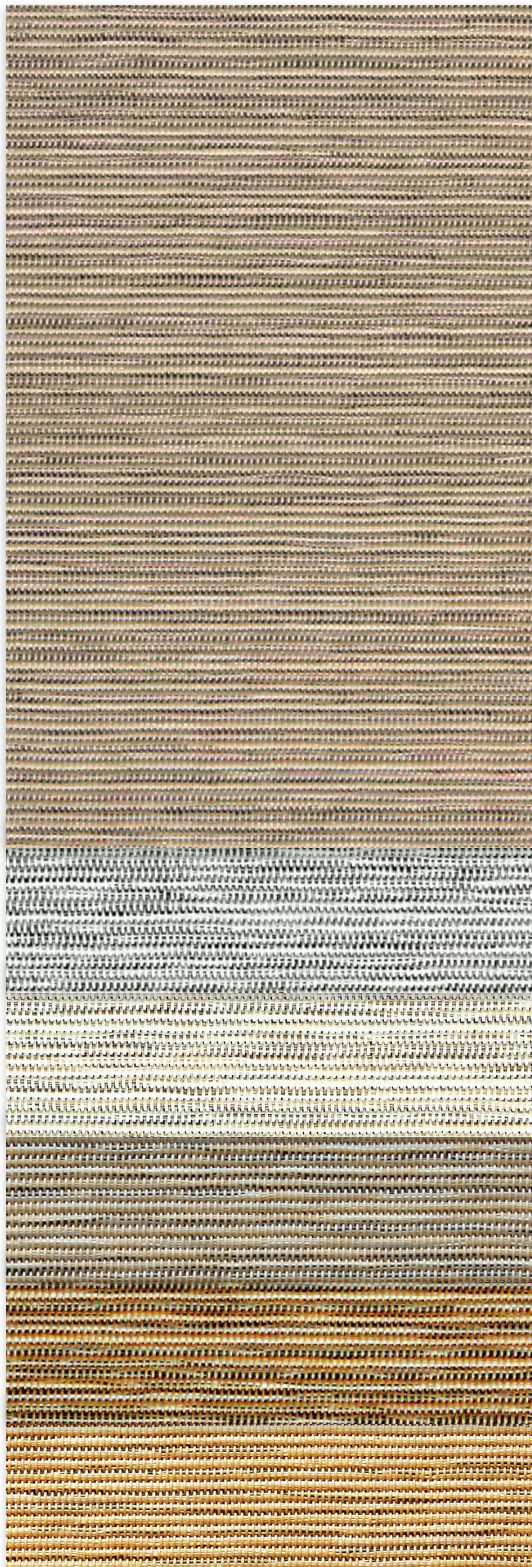


S Screen

Decorative | 4% openness



0070C1
Granite

0020D2
Marble

0020D1
Porcelain

0200C1
Jute

0100C2
Cork

0100N5
Papyrus



0610P6
Sesame

0100B6
Ginger

0100P1
Nougat

0610B2
Coffee Bean

0070B1
Peppercorn

0020P1
Seasalt

MERMET

Sun Control Textiles™

Specifications

Item Number	001604
Product Category	Decorative
Fabric Style	Plain Weave
Openness Factor	4%
Composition	33.6% Fiberglass 59.6% Vinyl 6.8% Polyester
UV Blockage	Approximately 96%
Standard Packaging	Rolls of 23 ly (21 lm)
Width	98 in (250 cm), 122 (310 cm)
Weight	18.9 oz/yd ² (642 g/m ²) ±5%
Thickness	.037 in (0.93 mm) ±5%

Classifications

Fire Classifications	NFPA 701-10 TM#1, California U.S. Title 19, CAN/ULC-S109-03 Small & Large Flame Test
Bacterial & Fungal Resistance Environment	ASTM E2180, ASTM G21
Acoustic	RoHS - Lead Free, GREENGUARD Gold NRC 0.15, SAA 0.14

Fabrication

Cutting: Cold, Ultrasonic or Crush | **Welding:** Radio Frequency, High Frequency, Impulse, Hot Air or Wedge
We recommend testing all cutting and welding methods prior to use to confirm they meet your individual fabric specifications.

S Screen

ITEM	COLOR
0070C1	Granite
0020D2	Marble
0020D1	Porcelain
0200C1	Jute
0100C2	Cork
0100N5	Papyrus
0610P6	Sesame
0100B6	Ginger
0100P1	Nougat
0610B2	Coffee Bean
0070B1	Peppercorn
0020P1	Seasalt

F A B R I C					F A B R I C + G L A S S			
Rs (%)	thermal Total Solar		optical		commercial SHGC % Improvement		residential SHGC	
	As (%)	Ts (%)	Rv (%)	Tv (%)	Interior	Exterior	Interior	Exterior
31	60	9	32	8	26	84	0.51	0.12
48	42	10	51	9	39	84	0.41	0.11
59	29	12	62	10	45	82	0.36	0.12
43	46	11	44	9	34	82	0.44	0.12
35	55	10	34	8	29	84	0.49	0.12
38	51	11	37	9	29	82	0.48	0.12
18	76	6	17	6	18	84	0.58	0.11
36	55	9	33	6	26	84	0.49	0.11
37	53	10	34	7	29	84	0.49	0.12
14	80	6	12	5	16	84	0.60	0.11
32	61	7	28	5	24	87	0.51	0.10
54	35	11	54	9	39	84	0.39	0.11

Warranty

5 Year Exterior & 10 Year Interior

Care & Cleaning

Remove dust with a vacuum cleaner or compressed air. Do not scrub. Do not use solvents or any abrasive substance which might damage the coating of the fabric. Clean with a sponge or soft brush dipped in soapy water using a mild detergent. Rinse with clean water. Leave the blind down until completely dry. You can also very gently rub the fabric with a clean white pencil eraser to remove small stains.

The fabric performance tests were conducted in accordance with ASTM E891 & ASTM E903-96: Solar Transmittance (Ts), Solar Reflectance (Rs), Solar Absorptance (As), Visible Reflectance (Rv), and Visible Transmission (Tv). Glass performance tests for Solar Heat Gain Coefficient (SHGC) were conducted using the Lawrence Berkeley National Laboratory Window 7.3 NFRC certified software. SHGC % improvement for commercial applications is based on a standard commercial glass makeup of Double Glazing 6 mm | 1/2" air | 6 mm with low E on surface #2. SHGC for residential applications is based on a default residential glass makeup of 3mm clear glass | 1/2" air | 3mm clear glass. Results for SHGC were obtained using the center of glass. Acoustical performance was tested in accordance with ASTM C423-09a: NRC is Noise Reduction Coefficient, SAA is Sound Absorption Average. For up-to-date test results, performance specifications and larger samples, contact the Mermet Technical Department at www.mermetusa.com.

Mermet Corporation
 5970 N. Main Street ■ Cowpens, SC 29330
 Ph 1.866.902.9647 ■ info@mermetusa.com

mermetusa.com