

NORDIC SCREEN PLUS BASKETWEAVE

ROLLER SHADE FABRICS

FABRIC SPECIFICATIONS

OPENNESS FACTOR

1%

COMPOSITION

75% PVC, 25% Polyester

WIDTH

118"

WEIGHT

14.43 oz/yd2 (480 g/m2)

THICKNESS

.026"

STANDARD PACKAGING

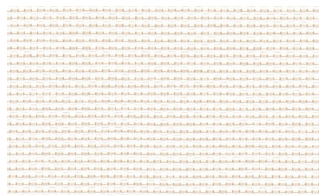
Rolls of 33 ly (30 lm)

FIRE CLASSIFICATIONS

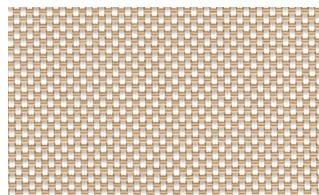
NFPA-701-10 TM#1, GB 50222-1995 B1

ENVIRONMENTAL BENEFITS

GREENGUARD Gold Certified



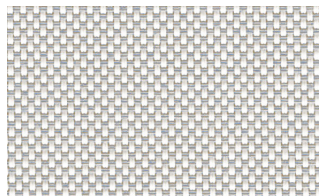
101 WHITE/WHITE



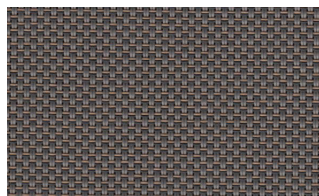
107 WHITE/SAND



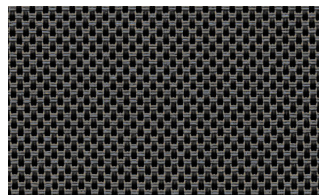
063 MIDNIGHT/TAN STONE



105 WHITE/GRAY



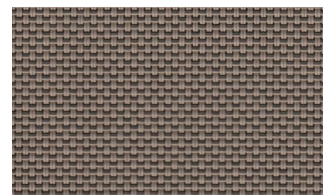
216 ASH/TAN STONE



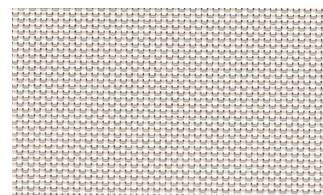
403 BLACK/PEARL



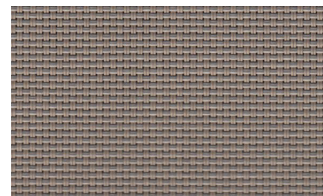
102 WHITE/LINEN



220 SABLE/SHALE



209 WHITE/WHITE PEARL



218 SABLE/ASH PEARL



211 MIDNIGHT/MAG.STONE



404 BLACK/BLACK

CARE & CLEANING

Clean with a sponge or a soft brush dipped in soapy water using mild detergent.
Rinse with clean water.

| t: 800-533-9464 | f: 765-884-3274 | e: Sales@Oxford-House.com

www.Oxford-House.com



NORDIC SCREEN PLUS BASKETWEAVE

ROLLER SHADE FABRICS

FENESTRATION DATA

ID	COLOR NAME	RS	TV	SHGC/G VALUE	
					DG
101	White/White	79	7		0.24
220	Sable/Shale	25	2		0.29
211	Midnight/Magnetic Stone	6	1		0.30

The performance tests were conducted in accordance with EN 14501:2005, ASTM E891, ASTM E903-96: Solar Heat Gain Coefficient SHGC (G-Value), Solar Transmittance (Ts), Solar Reflectance (Rs), Solar Absorptance (As), Visible Light Transmission VLT (Tv), Double Glazing 6 mm / ½" air / 6 mm with low E on surface #2. Glass performance tests were conducted using the Lawrence Berkeley National Laboratory Window 6.3 NFRC certified software.